

THE JEFFERSON JOURNAL



A PUBLICATION OF THE JEFFERSON TOWNSHIP HISTORICAL SOCIETY
"COMMITTEE FOR '76"

Fall 2009

Volume 1, Issue 5

Inside This Issue:

- President's Message
- Director's Highlights
- What's the Dirt?
- Member Honored
- Archivist & Curator's Corner
- Society News & Announcements

Calendar of Events

J.T. Historical Society/Museum:

October 1st

General Membership Meeting
7:30 pm at Camp Jefferson

- ◆ Nominations for 2010 Officers & Trustees will be entertained
- ◆ Proposed Acquisition Policy will be offered (please review policy on Society's website)

October 4th

Museum Open 1-4 pm

October 7th

Museum Christmas meeting
Held at the Museum 7:30 pm

October 31st

Museum Haunting 7:30 pm
Held at the Museum

November 1st

Museum Open 1-4 pm

November 4th

General Membership Meeting
Election of Officers
7:30 pm at Camp Jefferson

December 5th & 6th

Museum Christmas
(see enclosed flyer)

President's Message - Jefferson Township Museum - Christine Williams

Museum Placed on State Registry

The George Chamberlain House known as the Jefferson Township Museum has been placed on the New Jersey State Register of Historic Places. The Museum has also been nominated for national registry. This whole process began almost three years ago when the Dover-Milton Road Bridge was replaced. The URS Corporation with Architectural Historians Kate Jefferson and Zana Wolf and

Historian Ingrid Wueber were selected to do the appropriate research. They were aided by members of the Jefferson Township Historical Society. The State's Historic Preservation Office signed the official document September 3, 2009. There will be copies of the research at the Museum and the Jefferson Public Library. The whole area in which the Museum is located is known as Milton Village. A recently erected

marked gives a brief history of the Village and also states it being eligible for state and national registry. All of this gives our township well deserved prestigious recognition for our past and how well we preserve it.

The Register of Historic Places is the official list of the nation's or state's historic resources worthy of preservation. The first national historical registry was established by Congress in 1935. The NJ Register of Historic Places is the official list of historic resources of local, state & national interest created in 1970. Both have the same criteria for registry.

Director's Highlights - A Feathered Feature - Carol Keppel

Backyard barbecue entertainment hit a high note not long ago as some of our members enjoyed a different kind of water park antics. An energetic flock of bluebirds had a great time cooling off in a refreshing birdbath after their day of fun in the sun. It reminded

us that even as cool weather heads our way, there's still fine outdoor fun to be had in Jefferson, and the local birds obviously agree. Our feathered friends are currently a point of discussion within the Society because we have set "An Audubon Christmas" as

our theme for this year's December open house. Birds were an important decorating theme in Victorian times and many replicas will be featured in our displays.

Our museum gardens, still bright with blooms, would have appealed to noted
(continued inside)

What's the Dirt? - Museum Garden Club - Roberta Shaw, Master Gardener

Fall is approaching, and now is the best time to plant trees and shrubs. The warm soil and cool nights are the perfect conditions for root production. Sale prices at most garden centers are also another advantage of fall planting. Remember to water weekly, it is necessary to ensure that the plant is properly hydrated for the winter. Continue to water through November

unless Mother Nature does it for us.



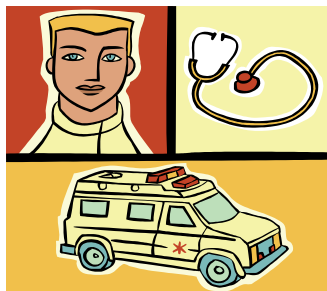
It's not too early to start thinking about our Spring Plant Sale. Irises and peonies should be divided and replanted in the fall, as well as other spring and

summer flowering perennials. Place your divided plants into pots, tag, water, and winter them over in a protected area of your garden, use leaves or mulch as insulation around the pots for added protection. In the spring, move them to a sunny area and keep them watered. They will be well established in their pots and in prime condition for the plant sale!



Members Honored

Larry Parr, a life member of the Jefferson Township Historic Society has been honored for his 50 years of service to the Milton First Aid Squad. His dedication of service has helped to serve so many in our community. Our township would not be what it is today without people like Larry. Thank you so much for your dedication to us all.



The Witches of Jefferson Ride Again!

The Museum will once again become haunted!

Last year volunteers from both the Garden Club and the Historic Society not only decorated the outside of the museum in a most spirited way, but also dressed as witches and handed out candy. This was done in connection with the Halloween party held at Fire Company #1. Dover-Milton road is closed for a short period of time while the children are allowed to parade down the street behind the fire truck. As the children passed the Museum, the "good" witches of Jefferson handed out candy. It is again our plan to haunt the museum again this Halloween. All those interested in participating in the festivities, please see the enclosed flyer for more information.

Easy Fall Clean-up

Leftover Leaves

After raking autumn leaves into bags, pile the bags in an out-of-the-way corner. In the spring, line the aisles of the garden with old newspapers, and then cover them with the leaves. The combination of the newspaper and leaves holds in moisture and minimizes weeds. In the Fall, all this is organic matter.

-"Birds in Bloom Magazine" Oct/Nov

Archivist & Curator's Corner - Jana-Lee Bair, Archivist & Lynda MacDonald, Curator (more pictures inside)

As our Curator has previously reported she has been on the hunt for items to put in our museum. Below are pictures of her latest find, a real Victorian parlor set! The parlor set is in need of a lot of work, so a few of us members

are busy with the restoration. With the talents from members Jana-Lee Bair, Carol Keppel and Lynda MacDonald we should soon have a lovely new set for our parlor.



Society News & Announcements

Membership

Please welcome our new members: Rodney Frelinghuysen (individual), Joe & Cindy Riggs (Life Membership).

Our apologies to new life member Margorie Schubert for misspelling your name in our summer edition.

Museum on the Web!

JHTS has a new website! It includes pictures, past and current newsletters, general info. and links thanks to Richard West. Please check us out at: www.jhistoricalsociety.org

Giving (Donations are Tax Exempt)

The JT Society is not solely supported by membership dues. Therefore the society always welcomes needed donations. Checks payable to JT Historical Society can be sent to the Jefferson Township Museum, 315 Dover-Milton Road, Jefferson Township, NJ 07438

All Historical Society, Museum and Garden Club updates are sent via email. If you wish to receive these updates, send your email address to Christine Williams at:

president@jhistoricalsociety.org

News

●Staff Sgt. Steven Deyoung, son of James and Joan Deyoung, has returned home from Iraq and is stationed at Ft. Indian Town Gap, PA.

He is a recipient of a Bronze Star.

●Corporal Jonathan Shaw, son of David and Roberta Shaw returned home from deployment in August. He is currently stationed at Twenty-Nine Palms, CA.

It is certainly not our intent to exclude anyone, so please if you know of any membership news that you would like to share, please email Robin Trevor at Trevor30@optonline.net

We would be happy to publish it in our next issue.

Archivist & Curator's Corner - Jana-Lee Bair & Lynda McDonald (continued)



Director's Highlights - A Feathered Feature—Carol Keppel (Continued from page 1)

naturalist and artist John James Audubon, and he would have found many delightful species for his renderings. Ready for posing, there would have been woodpeckers, robins, wrens, finches, flickers, catbirds, mockingbirds, chickadees, titmouses, blue jays, and juncos. Farther afield, in open meadows, he'd spot grackles, red-wing blackbirds, and egrets by the ponds. . Deeper into the woods, he'd heard the responses of siskins, cardinals, and cedar waxwings, and in the evening the calls of coot and owl.

You might wonder why he even bothered to travel much farther west, having so many species close to his Pennsylvania home to add to his portfolio, but his goal was to include *all* the American birds. There were over 400 illustrations in his *Birds of America* volume, and we here in New Jersey can notably account for over 100 of bird selections. If you'd like to learn more about the birds we mention here, and the rest of what our area boasts, you can refer to a beautiful field guide by Stan Tekiela found in our library.

Be sure to pay close attention to the information on our state bird, the Eastern goldfinch as well. You can be sure to see plenty of them nesting among our Christmas Open House decorations.

With that thought, a second follows quite logically: Do we have a Jefferson township bird? If not, what would you suggest? It would make for an interesting survey. Let us know your thoughts!



Jefferson Township Historical Society

"Committee for '76"

315 Dover-Milton Road Jefferson Township, NJ 07438

Museum Hours:

First Sunday of the Month

1-4 pm or by Appointment

973-697-0258

Visit our website: www.jthistoricalsociety.org

For additional information email us at
info@jthistoricalsociety.org

Jefferson Township Historical Society

President
Christine Williams

Vice President
Carol Keppel

Second Vice President
Nancy Chamberlain

Treasurer
Donna West

Secretary
Mary Parr

Editor
Robin Trevor

Anyone interested in joining the editorial
staff, please email your interest to the
editor

Trustees

Greg Brown
Georgeanna Lewis
Gloria Mikowski
John Scheri
Clifford Williams
R. Richard Willis

Museum Director
Carol Keppel

Assistant to the Director
Marilyn Reitzel

Curator
Lynda MacDonald

Assistant to the Curator
Jana-Lee Bair

Archivist
Jana-Lee Bair

Jefferson Township Historical Society
315 Dover Milton Road
Jefferson Township, NJ 07438

Affix Label Here

tear off here

tear off here

Membership Form

I would like to become a member/renew my membership:

Type of membership: (Circle Type requested)

Individual \$ 15.00 Business \$ 100.00

Family \$ 25.00 Life \$ 250.00

Sustaining \$ 75.00 Patron \$ 500.00

Name: _____

Address: _____

Email: _____

Phone: _____

**I am a current member and would like to make an additional
donation in the amount of \$ _____**

To be used towards the following:

- ◇ General Fund
- ◇ Scholarship Fund
- ◇ In memory of: _____

Please make checks payable to:

Jefferson Township Historical Society

315 Dover Milton Road

Jefferson Township, NJ 07438