

THE JEFFERSON JOURNAL



A PUBLICATION OF THE JEFFERSON TOWNSHIP HISTORICAL SOCIETY
"COMMITTEE FOR '76"

Winter 2009

Volume 1, Issue 2

Inside This Issue:

- President's Message
- Director's Highlights
- Museum Christmas Weekend
- What's the Dirt?
- Old Monroe Stone School
- Archivist
- Curator's Corner
- Society News & Announcements
- Past Times

Calendar of Events

J.T. Historical Society/Museum:

February 1st
Museum Open-Gibson Girl Plate Display
1-4 pm

March 1st
Museum Open
1-4 pm

March 5th
General Membership Meeting
(program to be announced)

April 2nd
General Membership Meeting
Ringling Mansion

April 5th
Museum Open
1-4 pm

Around the Area:

February 8th
Abraham Lincoln: Man of Sorrow
Sparta Library 2 pm

February 12-15th
NJ Flower & Garden Show
NJ Convention Center, Edison, NJ

February 13th
Gibson Girl Meets Victorian Lady
1 pm Cultural Arts Bldg, Hackensack
201-288-1132

President's Message - Christine Williams

Happy New Year!

I greet you all with great anticipation and excitement about the new year unfolding before us. This past year was extremely productive with increasing membership and wonderful programming. We have an active membership which accounts for this success. The membership is lead by a dedicated executive

board. Thank you to all the volunteers who painted, scrubbed, sanded, decorated, weeded and planted to make the Jefferson Township Museum the jewel of the township. It has become one of the most photographed buildings in the entire area. Participation and donation are the two key words for our organization. You make the difference.

Update: Our Museum is under consideration for acceptance to the National Register of Nomination for the George Chamberlain House known as the Jefferson Township Museum.



Director's Highlights - "Bustling About in December" - Carol Keppel

Preparations for the annual Museum Christmas have always created a flurry of activity involving dedicated members cleaning, decorating, and baking for the many visitors attracted by the event. This year, we further enhanced our Victorian atmosphere with do-cents dressed in period costumes. Since our representation of home life in Jefferson spans several decades,

we spent considerable time researching the fashions of the latter part of the 1800's. A look at the styles in vogue throughout these decades helped the members choose an authentic style of dress or accessory. We learned that the *bustle* as a fashion statement was very important during our museum's period, so many of the skirts billowed with these ruffled layers. We could achieve "the

look" with elements from our own personal collections or sew new ones. The result was a new level of excitement and the museum literally glowed with beautifully colored and embellished costumes. Since it was so much fun to dress up, we plan to enlarge our wardrobes with more historic pieces for the seasons ahead. Many thanks and compliments to all who helped research, create, and model the fashions.

Museum Christmas Weekend

Our Open House celebration this year was certainly a fragrant and delectable one. With the inspiration of "A Gingerbread Christmas", the Museum Garden Club decked the rooms with spicy sweets and festoons of evergreens and ginger people. Beautifully designed wreaths, gar-

lands, decorated trees, and centerpieces gave our vintage building an air of traditional holiday gaiety. We even had a gingerbread house in the shape of the museum itself! Both afternoons resonated with music from our melodium, guitars, and choral groups, often ac-

companied by cheerful caroling from our guests. Outside, the old potbellied stove steamed once again, roasting chestnuts, mulling cider, and warming many cold hands. Hardy volunteers braved the bitter cold and handed out treats along with tales of the townships history. (continued inside)

What's the Dirt? - Museum Garden Club - Roberta Shaw, Master Gardener

Brrr it's cold outside and a blanket of snow is covering the garden. Will Spring ever arrive? Chase away the winter doldrums by snuggling up with a gardening book, magazine, or seed and plant catalogs. Now is the perfect time to reflect on your garden and start planning for the season ahead.

Perhaps you had a plant or an area of the garden that struggled to perform. Look at the plant's requirements for light, soil PH and moisture. Doing a soil test in the Spring will help to determine if the soil needs amending or just relo-

cating a particular plant to a site that suits the plant's needs. For soil test information and instructions go to www.njaes.rutgers.edu/services

Thinking about renovating or creating a new garden? Get inspiration and stimulate your senses by attending a Flower and Garden Show. Plan to sit in on one or more of the many lectures available at the show. NJ Flower and Garden Show - Feb. 12-15 www.macevents.com/show.cfm/eventID/121

Philadelphia Flower Show - March 1st - 8th www.theflowershow.com

Springfest Flower and Garden Show (Sussex County Fairgrounds) 3/12-3/15 www.springfestgardenshow.com

This year's "Plant of the year" as selected by the Perennial Plant Association, is awarded to *Hakonechloa macra 'Aureola'*. This is an ornamental grass, 12" tall x 18"w, has bright yellow cascading foliage, shade tolerant, deer resistant, likes evenly moist soil, and is hardy to zone 5. This will be a welcomed addition to my garden this year!

Old Monroe Stone School - Georgeanna Lewis, JTHS Trustee

The Hardyston Heritage Society has restored the stone one room school located at 410-412 Route 94 near the Hardyston- Sparta border line. The school was used by children grades 1 to 8 as early as 1819 and was closed in 1926, when a population increase opened a two room wood school nearby. The Hardyston Heritage Society began restoration work in 1976 and opened to the public in 1980. There is a large parking area with picnic tables and a working water pump on the Sparta side of the building. The school is now open free to

the public on Memorial Day from 1 to 4 PM and for a minimal charge on the first Sunday of the months of June through October from 1 to 4 PM. Fees are \$1 for students and senior citizens and \$1.50 for adults. Books telling the history of Hardyston Township and what it was like to attend a rural school are available at the school.

There is also a slideshow about early rural education which has been converted to PowerPoint for use outside the Monroe school. Groups may also visit the school at other times by

contacting G. Lewis at 973-663-0075 or at the website at www.hardystonheritage.org.



Archivist - Jana-Lee Bair

Input of the Oak Ridge Presbyterian Cemetery should be completed by the end of the month and this will leave just the Milton Methodist Church Cemetery and the Berkshire Valley Presbyterian Cemetery. One item of interest that was discovered while going through the cemetery

records is that there is a Revolutionary Patriot buried in the Oak Ridge Presbyterian Cemetery-Cornelius Davenport. The National Society Daughters of the American Revolution has a mission to locate, mark and preserve graves of individuals who have served in the

American Revolution. Our Historical Society has several members of DAR, Jana-Lee Bair, Lynda Mac Donald, Mary Parr and Martha Scheri and several prospective members Carol Keppel, Marilyn Rietzel and Robin Trevor.

Curator's Corner - Lynda MacDonald

During our December open house, I was in awe all over again of the beauty of our "home". We really have made progress in a relatively short time... and with a tight budget. The reason is, I believe, love, dedication, and stick-to-it-iveness—(aka purpose and singlemindedness.) Movers and shakers showed up in gorgeous period gowns!! We did have a great time and made some money in our shop downstairs in the kitchen, too.

This all reminds me of another woman who had great American can-do spirit----

Nellie Bly. Having read Jules Verne's *AROUND THE WORLD IN EIGHTY DAYS* (published in France in 1873), Nellie decided to try to beat Phileas Fogg's time. On Nov. 14, 1889, she set out across the Atlantic. Her steamer trunk had to have been stuffed full if she took outfits (and undies) such as WE were wearing! Nellie had many interesting and harrowing adventures, and 72 days later, on January 25, 1890, arrived back in our very own Jersey City to the booming of cannons. I wonder if the family living in our house

followed her trip's progress. We would have, wouldn't we?

My assistant and I are making some more progress in the photographing of contents. We should be finished with drawer contents, small things, and any new acquisitions by the end of January.

Read up on Nellie Bly...get that can-do spirit. Come and visit. Come and help us make our "home" even better.

Society News & Announcements

Membership

Please welcome our new members: Diana Filan and David and Roberta Shaw. Membership runs on a calendar year and is due January 1, 2009. Checks payable to the JT Historical Society can be sent to the Jefferson Township Museum, 315 Dover-Milton Road, Jefferson Township, NJ 07438

Giving (Donations are Tax Exempt)

The society always welcomes donations. Checks to JT Historical Society can be sent to the Jefferson Township Museum, 315 Dover-Milton Road, Jefferson Township, NJ 07438

All Historical Society, Museum and Garden Club updates are sent via email. If you wish to receive these updates, send your email address to Christine Williams at info@jthistoricalsociety.org

News

- Sgt. Stephen Deyoung with the 56 Stryker Brigade, son of James and Joan Deyoung, will be deployed in January to Iraq through Fort Dix.
- Corporal Jonathan Shaw, son of David and Roberta Shaw will be deployed January 9th on board the USS New Orleans as a

member of the Marine Expeditionary Unit.

It is certainly not our intent to exclude anyone, so please if you know of any membership news that you would like to share, please email Robin Trevor at Trevor30@optonline.net

We would be happy to publish it in our next issue.

"Be always at war with your vices, at peace with your neighbors, and let each new year find you a better man" - Benjamin Franklin

Museum Christmas Weekend (Continued)

This year, for the first time, the basement door was open, ready to show the first stages of the kitchen restoration. Our cast iron range, Hoo-sier cabinet, and cozy yellow walls repainted in their original shade gave visitors their first glimpse into life as it was in the heart of this home. They became display areas for a wealth of holiday wares, vintage items, and gingerbread treats sold in "Miss Elizabeth's Shoppe". The number of visitors exceeded 200, the shop sales were impressive, and all agreed that the weekend was a stunning success.



Pictured left to right in Miss Elizabeth's Shoppe are Jana-Lee Bair, Christine Williams and Robin Trevor.

Miss Elizabeth's Shoppe

The marvelous old general store showcase now displays not only historical retail items but vintage reproductions and genuine antiques of the late Victorian era. Items are needed for the newly opened Miss Elizabeth's Shoppe. We are looking for small antique/period pieces and handcraft items. We are also willing to accept some consignment pieces. Please contact either Carol Keppel 973-697-5328 or Christine Williams 973-697-8675. As with the Museum itself, "Miss Elizabeth's Shoppe will be open the first Sunday afternoon of each month and by appointment.

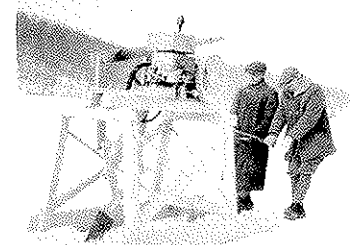
Past Times - Ice Harvesting in Jefferson - R. Richard Willis, Trustee

Before refrigeration, natural ice was the method of preserving food. Ice was harvested on almost any body of water large enough to support ice production. Larger homes in Jefferson would have private ice houses. On Lake Hopatcong there were five commercial ice-houses. Four of them were in Jefferson. Nolans's Point was the largest, Lake Forest, Callaghan's Ice House, located at the mouth of Hurdstown River and Duck Pond, now known as Lake Shawnee. All four icehouses made up the **Consumers Coal & Ice Company** which was owned by the Brady brothers. Their home base was where Gatwyn's II is now located. The process of harvesting ice was a simple one but labor intensive. The man power needed to endure the bitter cold and adverse conditions was supplied in great part by the "street or homeless people" of our cities surrounding NYC area. The ice was plowed then scored. Sawing followed. Many kinds of saws were tried. Some were gasoline motor pow-

ered and some were steam powered. The best method was the old-fashioned hand saws. The ice was hauled to the ice houses usually by steam boats on Lake Hopatcong. On smaller bodies of water it would be pushed by pike poles. If it was too thick it would be shaved to a uniform thickness usually 17". The ice would be put on the conveyors which were raised or lowered to accommodate the placement in the ice houses. A Quality Control person stood at the top of the conveyor to inspect the ice. If there were air bubbles, seaweed or a fish or even a part of a fish, off it would go to the scrap heap. Only the best clear ice was saved for sale. The un-perfect ice was free for the taking. Many of the enterprising locals would store this ice until summer and sell it to campers or vacationers. Ice was then packed in layers. Between

these layers either saw dust or lake seaweed was used for insulation.

On Lake Hopatcong, early on when the Morris Canal was in operation ice was shipped by canal boats to areas of need. But when the Central Railroad of New Jersey arrived at Noian's Point in the 1880's, the ice was shipped by rail. By the early 1920's refrigeration became the way to preserve food and the ice business came to an end. Private homes and some smaller businesses still used ice for their needs.



Jefferson Township Historical Society

"Committee for '76"

315 Dover-Milton Road Jefferson Township, NJ 07438

Museum Hours:

First Sunday of the Month

1-4 pm or by Appointment

973-697-0258

Visit our website: www.jthistoricalsociety.org

For additional information email us at
info@jthistoricalsociety.org

Jefferson Township Historical Society

President
Christine Williams

Vice President
Carol Keppel

Second Vice President
Nancy Chamberlain

Treasurer
Donna West

Secretary
Mary Parr

Editor
Robin Trevor

Anyone interested in joining the editorial
staff, please contact Robin Trevor at
trevor30@optonline.net

Trustees
Greg Brown
Georgeanna Lewis
Gloria Mikowski
John Scheri
Clifford Williams
R. Richard Willis

Museum Director
Carol Keppel

Assistant to the Director
Marilyn Reitzel

Curator
Lynda MacDonald

Assistant to the Curator
Jana-Lee Bair

Archivist
Jana-Lee Bair

Jefferson Township Historical Society

315 Dover Milton Road

Jefferson Township, NJ 07438

Affix Label Here

tear off here

tear off here

Membership Form

I would like to become a member:

Type of membership: (Circle Type requested)

Individual \$ 15.00	Business \$ 100.00
Family \$ 25.00	Life \$ 250.00
Sustaining \$ 75.00	Patron \$ 500.00

Name: _____

Address: _____

Email: _____

Phone: _____

I am a current member and would like to make an additional donation in the amount of \$ _____

To be used towards the following:

- ◇ General Fund
- ◇ Scholarship Fund
- ◇ In memory of: _____

Please make checks payable to:

Jefferson Township Historical Society

315 Dover Milton Road

Jefferson Township, NJ 07438